



WICKLOW COUNTY COUNCIL

WINTER SERVICE PLAN 2019 to 2020

VERSION: FINAL



**TRANSPORTATION, WATER & EMERGENCY SERVICES DIRECTORATE,
WICKLOW COUNTY COUNCIL,
COUNTY BUILDINGS,
WICKLOW TOWN,
CO. WICKLOW.**

October 2019

Contents

1.0	DOCUMENT CONTROL.....	3
2.0	APPROVAL LIST	3
3.0.	DISTRIBUTION LIST	4
3.1	Internal Distribution list	4
3.2	External Distribution	5
4.0	PURPOSE OF SCOPE	5
5.0	POLICY.....	5
	Priority 1 (Red Routes).....	5
	Priority 2 (Blue Routes).	5
	Priority 3 (Unmarked Routes).....	6
	Footpaths.....	6
6.0	OVERALL MAP OF SERVICE PLAN AREA	7
7.0	RESPONSIBILITIES	7
7.1	Winter Services Manager.....	7
7.2	Winter Service Duty Engineers.....	8
7.3	Municipal District Engineers	9
7.4	General Service Supervisors.....	9
7.5	Drivers.....	9
8.0	CONTACT DETAILS.....	10
9.0	SUPPLEMENTARY RESOURCES	10
10.0	TII DECISION MATRIX	11
11.0	TII TREATMENT MATRIX.....	12
12.0	PLANT, VEHICLES AND EQUIPMENT	13
13.0	WINTER SERVICE DEPOTS.....	13
14.0	MATERIALS AND SPARES.....	14
14.1	Salt.....	14
14.2	Grit	14
14.3	Fuel & Plant.....	15
15.0	MMaRC AREA - GSJ CONSORTIUM AND BAM PPP	15
	APPENDIX 1 – WINTER SERVICE MAP	16
	APPENDIX 2 - STAFF RESPONSIBILITIES FOR PRIORITY ITEMS.....	14
	APPENDIX 3 – WICKLOW COUNTY COUNCIL DUTY ENGINEERS ROSTER	19
	APPENDIX 4 - DRIVER’S ROSTER & USE OF STAFF AS HELPERS	20
	APPENDIX 5 - CONTACT DETAILS	21
	APPENDIX 6 - PLANT; VEHICLES AND EQUIPMENT	25
	APPENDIX 7 - WINTER SERVICE DEPOTS	28

1.0 DOCUMENT CONTROL

This document "Wicklow County Council Winter Service Plan 2019 to 2020 defines the methodology by which Wicklow County Council intends to deliver its Winter Maintenance Programme for Winter Season of October 2019 to April 2020.


Any issues relating to the content of this plan should be referred to the Winter Services Manager for their attention.

A condensed non-sensitive version of this document may be made available on the Wicklow County Council website for public information.

Revision	Status	Revision Details	Issue Date
1.00	Draft Issue	Issued for Review	20th September, 2019
2.0	Final Draft 1	Issued for Signature	30 th Sept., 2019
3.0	Final Draft 2	Issued for Signature	8 th Oct., 2019
4.0	Final Draft 3	Issued for Signature	24 th Oct., 2019

2.0 APPROVAL LIST

This document has been circulated internally to relevant Staff for review prior to final approval.

Role	Name	Signature	Date
Director of Services for Transportation, Water & Emergency Services	Colm Lavery		
Senior Engineer	Michael Flynn		
Winter Service Manager	Paul Byrne		24/10/2019

3.0. DISTRIBUTION LIST

3.1 Internal Distribution list

This document shall be circulated to the following internal Staff in Wicklow County Council:-

Issued To	Position	Location
Colm Lavery	Director of Services, Transportation, Water & Emergency Services	Station Rd, Wicklow Town
Michael Flynn	Senior Engineer, Roads	Station Rd, Wicklow Town
Helena Dennehy	Senior Executive Officer, Roads	Station Rd, Wicklow Town
Paul Byrne	Winter Service Manager	Station Road, Wicklow
Allyson Minion	Administrative Officer, Roads	Station Rd, Wicklow Town
Deidre Forde	Duty Engineer	Station Rd, Wicklow Town
Conor Page	Duty Engineer	Station Rd, Wicklow Town
Declan O'Brien	Duty Engineer	Station Rd, Wicklow Town
Aoife Cashman	Health & Safety Officer	Station Rd, Wicklow Town
Dermot Graham	Baltinglass Municipal Municipal District Engineer	Baltinglass MD (Tinahealy sub office)
Pat Byrne	Executive Engineer, Baltinglass Municipal District	Baltinglass MD Office
Kevin Scanlon	Wicklow Municipal Municipal District Engineer	Wicklow MD Office
John Bowes	Arklow Municipal Municipal District Engineer	Arklow MD Office
Ruairi O'Hanlon	Greystones Municipal Municipal District Engineer	Greystones MD Office
Liam Bourke	Bray Municipal Municipal District Engineer	Bray MD Office
Aidan Dempsey	Chief Fire Officer	Bray Fire Station

3.2 External Distribution

Issued To	Position	Organisation
Noel O'Driscoll	Winter Services Manager	Wexford County Council
Pat Harrington	Winter Services Manager	Carlow County Council
Adrian Barrett	Winter Services Manager	Kildare County Council
Tony O'Grady	Winter Services Manager	South Dublin Co.Co.
Robert Burns	Winter Services Manager	Dun Laoghaire/Rathdown Co. Co.
Fraser Boyd	Operations Manager	M50 Concession Ltd.
Jason Bolger	Winter Services Manager	BAM PPP
Damien Breen	Winter Services Manager	GSJ
S. Smith	Winter Maintenance Manager	TII
P. Maher	Head of Network Operations	TII

4.0 PURPOSE OF SCOPE

The purpose of this document is to identify the processes, procedures and key personnel employed by Wicklow County Council to deliver the winter maintenance programme for County Wicklow for the operative period.

The operative period for the 2019 to 2020 winter maintenance programme commences on the **14th of October 2019** and ends on the **30th of April 2020.**

5.0 POLICY

Due to the length of the road network in County Wicklow, it is not feasible to treat all roads in the County during the Winter Season. Accordingly, the treatment of roads by Wicklow County Council during the Winter Service Period is based on a hierarchy of priority, which is defined as follows.

Priority 1 (Red Routes).

These are listed in the table below and consist primarily of routes which are of national importance (N81). These routes will be kept serviceable by Wicklow County Council as far as is reasonably practicable in all weather conditions.

Priority 2 (Blue Routes).

These routes listed below are of regional and local importance and Wicklow County Council will ensure as far as is reasonably practicable that these routes are kept serviceable. However, in

extreme and/or prolonged weather events the maintenance of serviceability of Priority 1 Routes will take precedence over Priority 2 Routes at all times.

Priority 3 (Unmarked Routes).

These routes consist of the balance of the regional road network and the local road network. These routes are not normally treated by Wicklow County Council as part of the Winter Service Programme but may (dependent on availability of resources) be treated once Priority 1 and 2 Routes are serviceable. Within Priority 3 emphasis will be placed on roads of higher importance than the balance of the network or roads requiring special treatment due to humanitarian or other relevant issues. These will be assessed at a local level on a case by case basis.

Route Designation	Description	Level of Service
Priority 1	N81	To be treated during all weather events and includes areas where mutually beneficial agreements are in place with neighbouring Local Authorities or other neighbouring Service Providers.
Priority 2	R117, R410, R412, R746, R747, R748, R749, R750 (Part), R751, R752, R753, R754, R755, R756, R757, R758, R759 (Part), R760, R761 (Part), R762, R763, R764, R765, R766, R767, R768, R774, R772 (Part)	To be treated where weather conditions have deteriorated to an extent where 'normal' winter driving precautions are no longer sufficient to maintain public safety. There is no guarantee that these routes will be treated.
Priority 3	All other Regional Routes and locally important roads. This could include certain roads in urban areas.	Not treated as part of the normal winter service but may receive intermittent treatment during certain severe weather events.

It is the policy of Wicklow County Council to carry out Winter Maintenance based on the priority of routes and the Level of Service to be designated under each priority heading.

The mobilisation and treatment times for the route types specified above will be as follows dependent on available resources.

Treatment Route	Priority 1	Priority 2	Priority 3
Mobilisation Time	2 hr	2 hr	When possible
Treatment Time	2 hr	4 hr	When possible

Footpaths

The determination of which footpaths (if any) should be treated will be decided locally by the MD Engineers/GSS's in each District and will depend on factors such as weather conditions, proximity to public transport services and the amount of footfall on the footpath concerned. (e.g. commercial town centres and proximity to educational / religious centres).

6.0 OVERALL MAP OF SERVICE PLAN AREA

Appendix 1 includes overall map of the area covered by the Winter Service Programme. Details included are:-

- The overall extent of the network covered by the Winter Service Plan
- The hierarchy of treatment of routes including Red for Priority 1 and Blue for Priority 2.
- Local Authority boundaries.
- Other Priority 1 Routes treated by third parties as part of their respective Winter Service Programmes.

7.0 RESPONSIBILITIES

7.1 Winter Services Manager

The Winter Services Manager (WSM) is responsible for the overall delivery of Wicklow County Councils response to cold weather events, in particular the winter salting/gritting response. The role overlaps with that of the Machinery Yard Engineer's duties in terms of responsibilities relating the plant, equipment and personnel engaged in winter Maintenance activities.

The WSM is responsible for ensuring the Winter Service Plan is updated as required. The WSM shall ensure all personnel listed in the document are briefed on their roles and responsibilities and that contact details are validated. The Winter Service Plan shall be made available to the public through the Wicklow County Council website.

The WSM shall ensure that all plant and equipment used in winter Maintenance activities is properly maintained and fit for purpose. The WSM shall also arrange calibration of plant and equipment and maintain up to date records of same.

The WSM shall prepare a rota of Duty Engineers for the winter maintenance season. The WSM shall co-ordinate the activities of the Duty Engineers and provide support and training as required.

The WSM, using information supplied by the MD Engineers, shall monitor stocks of salt and ensure that adequate supplies of salt are maintained throughout the winter service season. The WSM shall also ensure that salt depots are properly maintained and liaise with Municipal District Engineers with regard to the upkeep and maintenance of salt depots.

The WSM, with direct inputs from the MD Engineers, GSS's in each MD and Drivers in each MD, shall be responsible for the overall management of Health, Safety and Welfare for all Winter Maintenance operations. MD Engineers, GSS's and Drivers in each District shall immediately report any problems or issues related to Health, Safety and Welfare issues to the WSM and to the Health & Safety Officer, where appropriate.

Over the course of the 2019/20 season, a review of the following items shall be prioritised (refer to Appendix 2 - Staff Responsibilities for Priority Items, attached for more specific details):

- Documented Risk assessment of gritting routes
- Conduct H&S Audit of gritting operations
- Communication equipment and mobile phone coverage
- Depot improvements including loading equipment
- Lone working policy
- Working time act compliance

The WSM, based on information supplied by the MD Engineers, shall provide a weekly update to the SEO roads on Winter Service activities. This update shall provide data for inclusion in the CE's monthly report to Members on council activities.

7.2 Winter Service Duty Engineers

Wicklow County Council maintains a roster of three Duty Engineers who operate the Transport Infrastructure Ireland (TII) Vaisala DSS Manager Weather Prediction System for Wicklow County Council for the winter service season.

It is the Duty Engineer's responsibility to provide advice to the Municipal District Engineers in relation to the treatment of Priority 1 and 2 Roads. This advice is given in accordance with the policies and procedures set out in the Winter Service Plan and is based on the forecasts and information available to the Duty Engineer on the Transport Infrastructure Ireland (TII) Vaisala DSS Manager Weather Prediction Software.

The Duty Engineers normally operate a rota of one week on and two weeks off but this may vary to ensure continuity of Duty Engineer through holiday periods. The rotation time between Duty Engineer duty periods is 9am Monday mornings or as otherwise agreed between Duty Engineers. The roster is agreed between the three Duty Engineers prior to season commencement and senior management and Municipal District Engineers are notified of the roster arrangements. The TII, Met Eireann and neighbouring Local Authorities are also notified of the Duty Engineer Roster. The Roster is contained in Appendix 3.

In addition the Duty Engineers will commit to the following duties & procedures in accordance with TII agreements:

- To be available outside normal working hours.
- This means ANY TIME, for the rostered period.
- Keep a log of activities, operations, decision making etc and use the RoadDSS Manager module so that a complete picture of decision making and operations can be inspected by TII if required.
- Supplement the information contained on RoadDSS Manager if requested.
- Update the National Salt Management System (NSMS) on a weekly (or daily) basis and coordinate salt deliveries/collections for your county as required.

Outside of working hours, from their home the duty engineer will:

- Access the RoadDSS Manager system as required.
- Track the actual conditions over their area.
- Obtain updated or more detailed road weather forecasts by talking to a forecaster using The Telephone Consultancy Service¹ ; phone number 01 8064219 or 8064255 as a backup number.
- Use the thermal maps to direct field operatives to the more vulnerable areas with emphasis on precautionary salting.

7.3 Municipal District Engineers

Municipal District Engineers have overall responsibility for the delivery of the Winter Service Programme within their Municipal District in accordance with the policies and procedures set out in the Winter Service Plan. They are also responsible for the operation, maintenance and upkeep of the Road Maintenance Depots within their Municipal District and shall ensure that they have sufficient manpower, machinery and resources to enable them to provide a satisfactory and safe service.

The Municipal District Engineers shall immediately report any machinery defects or any Health, Safety and Welfare related issues to the Winter Service Manager/ Machinery Yard Engineer.

The Municipal District Engineer shall instruct the General Service Supervisors as to what treatments are required within their Areas.

7.4 General Service Supervisors.

The General Services Supervisors are responsible for the co-ordination of the Wicklow County Council Winter Service Programme on the ground in their respective areas. They shall act on the instruction of the Municipal District Engineer for their Area in relation to issues relating to the delivery of the Winter Service Programme.

General Service Supervisors who have responsibility for salt storage depots will liaise directly with the Duty Engineer responsible for monitoring salt stocks regarding stock levels and replenishing supplies; the Duty Engineer will then inform the WSM of any need for additional salt supplies that be required. This will generally be on a weekly basis, but may become more frequent during extreme weather events.

General Service Supervisors will also immediately report any Health, Safety and Welfare issues or problems to their MD Engineer.

7.5 Drivers

The Municipal District Engineers shall endeavour to ensure that sufficient drivers are available for the satisfactory delivery of the Winter Service Programme within their Municipal District Drivers shall report any machinery or plant defects to the General Service Supervisor upon discovery to ensure no interruption to delivery of the Winter Service Programme.

The General Service Supervisor shall contact the Machinery Yard Engineer and arrange for repair or replacement of defective machinery. The Municipal District Engineers shall agree a Drivers Roster for the Drivers within their Municipal District and submit it to the Duty Engineers before the beginning of each Winter Service Season. They should also notify Duty Engineers of any changes to the Drivers Roster during the Winter Service Season.

Drivers will also immediately report any Health, Safety and Welfare issues to their General Service Supervisor.

The Drivers Roster for the 2019 to 2020 Winter Service Season is contained in Appendix 4.

7.6 Helpers

Helpers are MD outdoor staff appointed to assist the Drivers during the mobilisation, loading, gritting and demobilisation activities during the winter maintenance operations period. Helpers will accompany the Drivers during their gritting runs, as may be required.

Helpers will also immediately report any Health, Safety and Welfare issues to the Driver and/or their General Service Supervisor.

Each individual MD Engineer is responsible for the selection of suitable outdoor staff to be appointed as Helpers on the trucks during salt loading and gritting operations. The use of Helpers is to be in accordance with the procedures contained in the Wicklow County Council document "Policy & Procedures on Lone Working", and all provisions of the Working Time Act (1997) must be adhered to.

8.0 CONTACT DETAILS

Contact details for Staff involved in Winter Service Programme delivery for Wicklow County Council are listed in Appendix 5. This information is sensitive and should not be disclosed to third parties.

9.0 SUPPLEMENTARY RESOURCES

Wicklow County Council has identified a number of private hire contractors that have various agricultural type spreaders, excavators, snow plough attachments and loading shovels for use as required. The calling in of such supplementary resources will be undertaken by the MD Engineers following consultation with the WSM and the Senior Engineer Roads.

Hire will be approved on a case by case basis as circumstances dictate. The use of private hire contractors will generally be directed towards priority 2 and 3 Routes while Wicklow County Council resources are focused on Priority 1 Routes.

Wicklow County Council may also utilise a number of private hauliers in order to transport de-icing material from various ports/commercial facilities to salt storage depots in County Wicklow.

10.0 TII DECISION MATRIX

The guidelines on the decision matrix for the Duty Engineers is as follows:-

Road Surface Temperature	Precipitation	Predicted Road Conditions		
		Wet	Wet Patches	Dry
May fall below 1°C	No rain No hoar frost No fog	Salt before frost	Salt before frost (see note a)	No action likely, monitor weather (see note a)
Expected to fall below 1°C	No rain No hoar frost No fog		Salt before frost (see note b)	
	Expected hoar frost Expected fog			
	Expected rain before freezing	Salt after rain stops (see note c)		
	Expected rain during freezing	Salt before frost, as required during rain and after rain stops (see note d)		
Expected Snow	Possible rain Possible hoar frost Possible fog	Salt before frost	Monitor weather conditions	
	Salt before snow fall			
<p>The decision to undertake precautionary treatments should be, if appropriate, adjusted to take account of residual salt or surface moisture.</p> <p>All decisions should be evidence based, recorded and require careful monitoring and review.</p>				

Notes:

- (a) In the event of a severe weather warning, additional procedures may need to be followed, which are contained in the document "GUIDANCE DOCUMENT 14 A GUIDE TO SEVERE WEATHER EMERGENCIES" (DECEMBER 2010), published by the National Directorate for Fire and Emergency Management. The Wicklow County Council Major Emergency Management Committee may be put in operation during a severe weather warning and they may issue more detailed directives to affected MD's in these situations.
- (b) Particular attention should be given to the possibility of water running across carriageways and other running surfaces e.g. surface water off adjacent fields after heavy rains washing off salt previously deposited. Such locations should be closely monitored and may require treating in the evening and morning and possibly other occasions. Ideally, the source of the run-off should be diverted from the roadway.
- (c) When a weather warning contains reference to expected hoar frost, considerable deposits of frost can occur. Hoar frost usually occurs in the early morning and is difficult to cater for because of the probability that any salt deposited on a dry road too soon before its onset, may be dispersed before it can become effective. Careful monitoring is required under this forecast condition that should ideally be treated just as the hoar frost is forming. Such action is usually not practicable and salt may have to be deposited on a dry road prior to but as

close as possible to the expected time of the condition. Hoar frost may also be forecast at other times of the day, in which case the timing of salting operations should be adjusted accordingly.

- (d) If under these conditions, rain has not ceased by early morning, crews should be called out and action initiated as rain ceases.
- (e) Under these circumstances rain will freeze on contact with running surfaces and full precautionary treatment should be provided even on dry roads. This is a most serious condition and should be monitored closely and carefully throughout the danger period.

11.0 TII TREATMENT MATRIX

The Treatment Guide for using Dry Unmodified Salt to treat road surfaces is as follows:-

Weather Conditions Road Surface Conditions Road Surface Temperature (RST)	Treatment Road Surface Temperature	Salt Spread Rate (g/m ²)	Ploughing
Frost or forecast frost RST at or above -2°C		10 to 20 Also refer to Note (b)	No
Frost or forecast frost RST below -2°C and above -5°C		20	No
Frost or forecast frost RST below -5°C and above -10°C and dry or damp road conditions		20	No
Frost or forecast frost RST below -5°C and above -10°C and wet road conditions (existing or anticipated)		2 runs X 20	No
Light snow forecast (<10mm)		20	No
Forecast for Medium/heavy snow or a freezing rain forecast		2 runs X 20	No
Ice formed	Above -5°C	20	Not possible
Ice formed	At or below -5°C	2 runs X 20	Not possible
Snow covering exceeding 30mm		20 to supplement ploughing, up to 40 if temperatures are falling	Required
Snow accumulations due to prolonged falls		20 to 40 to supplement ploughing	Required
Hard packed snow/ice	Above -8°C	Successive treatments at 20 to 40 (repeat as needed)	Not possible
Hard packed snow/ice	At or below -8°C	Successive treatments at 20 to 40, supplemented by abrasives (repeat as needed)	Not possible

Weather Conditions Road Surface Conditions Road Surface Temperature (RST)	Treatment Road Surface Temperature	Salt Spread Rate (g/m ²)	Ploughing
Sustained low temperatures	Below -10°C		

Notes:

- (a) Rate of spread for precautionary treatments may be adjusted to take account of variations occurring along the route such as residual salt, surface moisture (in the air or on the road surface) and traffic density.
- (b) For salt stored outside, it may be necessary to increase the spread rate for precautionary treatment salting from 10g/m² to 15 to 20g/m².
- (c) All decisions should be forecast based, recorded and require careful monitoring and review.
- (d) Ice refers to all ice on the road surface, including black ice.

Target Spread Rates by Location

Location	Salt Spread Rate
Carriageways	As described in the Treatment Matrix Guide
Hard shoulder or carriageway marginal strips	50% of selected treatment
Porous Surfacing	<u>Plus</u> 25% of selected treatment
Footways, cycletracks and pedestrian areas	25 g/m ²

12.0 PLANT, VEHICLES AND EQUIPMENT

Wicklow County Council operates a fleet of 10 trucks with fully demountable gritting units and snow ploughs to deliver the Winter Service Programme. Wicklow County Council also owns 6 loading shovels to service the gritters in the various Depots. Details of all plant are contained in the Tables in Appendix 6.

13.0 WINTER SERVICE DEPOTS

The delivery of the Wicklow County Council Winter Service Programme is undertaken from a number of Depots and distributed around the County. The details of the Depot locations and capacities are listed in the following Table. A Map showing the location of the Salt Depots along with the co-ordinates and contact information for each Depot are contained in Appendix 7.

Summary Details of Winter Service Depots

REF	Salt Depot Address	Route Serviced	Capacity (Tonnes)	Stock on the 26 th September, 2019 (Tonnes)
WW01	Killadreenan, Newtownmountkennedy, Wicklow	Priority 2	750	300
WW02	Baltinglass Area Depot, Kiltegan Road, Baltinglass	Priority 1 – N81 & Priority 2	600	140
WW03	Blessington Area Depot, Naas Road, Blessington	Priority 1 – N81 & Priority 2	1000	250
WW04	Ballingate, Carnew	Priority 2 -	800	120
WW05	Raheen, Roundwood	Priority 2 -	400	120
WW06	Ballygahan, Avoca, Co. Wicklow	Priority 2 -	500	0
		TOTALS:	4,050	930

14.0 MATERIALS AND SPARES

14.1 Salt

Wicklow County Council will be assigned an allocation, by the TII, of salt for use on National Roads (N81) for the current operative period. A further allocation of salt will be made available, by the Department of Transport, for use on Regional and Local Roads for the same period. Both these allocations will be made based on tonnage of salt used in previous seasons. The salt provided under both these allocations has been procured by the TII and the DTTaS, under National Framework Agreements. The Duty Engineers are responsible for reporting salt consumption on a weekly basis to the TII, via the web based National Salt Management System. The Duty Engineers also co-ordinate the ordering and collection of salt allocated under the two allocations to the Winter Service Depots.

14.2 Grit

In the event of snowfall being predicted, Wicklow County Council will arrange the delivery of 2 – 6 mm crushed stone grit to various Winter Service and other Depots throughout the County. If prolonged snow is expected, the routes to quarries will be kept serviceable to ensure continuity of supply. The supply of grit will be to facilitate the mixing with salt, if necessary, or the treatment of footpaths and lower priority routes. Certain locations have been identified in each area where stock piles of grit will be held and made available for local communities to treat roads which we do not have the resources to treat. Decisions on the provision and supply of grit will be made in each Municipal District on a case by case basis.

14.3 Fuel & Plant

Fuel for trucks is supplied directly at local fuel distribution depots. Donkey Engines are also filled at the Machinery Yard. The Machinery Yard supervisor is responsible for ordering and maintaining supply.

The Machinery Yard in Wicklow County Council holds (or can obtain) spare parts for vehicles.

The Machinery Yard in Wicklow County Council holds (or can obtain) spare parts for gritters and snow blades.

15.0 MMaRC AREA - GSJ CONSORTIUM AND BAM PPP

The TII Motorway Maintenance & Renewals Contract (MMaRC) Network A contractor, Globalvia Sacyr Jons (GSJ) share a Priority 1 (refer to Map) route, the M11/N11 with BAM PPP. GSJ and BAM PPP have agreed between themselves the boundary points of their Winter Service Areas along the M11/N11. This is generally located between Junctions 17 and 18. Both organisations Duty Engineers communicate their decisions to Wicklow County Councils Duty Engineers on a daily basis.

APPENDIX 1 – WINTER SERVICE MAP

REFER TO SEPARATE FILE ENTITLED: "Wicklow Co Co - Road Gritting Programme 2019-2020.pdf"

APPENDIX 2 – STAFF RESPONSIBILITIES FOR PRIORITY ITEMS

Item Description	Person(s) Responsible for Overall Management & Co-ordination	Person(s) Responsible for Implementation
Documented Risk Assessment of all Co. Wicklow gritting routes.	Winter Services Manager/Senior Engineer/Director of Services	MD Engineers
Conduct H&S Audit of gritting operations.	Winter Services Manager/Senior Engineer/Director of Services	EE or Technician, Roads Section (to be determined)
Communication equipment & mobile phone coverage; identification & recording of coverage black spots in each Municipal District.	Winter Services Manager/Senior Engineer/Director of Services	MD Engineers
Salt Depot improvements including provision of suitable loading equipment.	Winter Services Manager/Senior Engineer/Director of Services	MD Engineers
Ensuring ongoing compliance with procedures in the Wicklow County Council Lone Working Policy document during the Winter Maintenance season.	Winter Services Manager/Senior Engineer/Director of Services	MD Engineers, GSS's and/or MD Administrators
Ensuring ongoing staff working hours compliance with the regulations contained in the Working Time Act (1997) during the Winter Maintenance season.	Winter Services Manager/Senior Engineer/Director of Services	MD Engineers, GSS's and/or MD Administrators

APPENDIX 3 – WICKLOW COUNTY COUNCIL DUTY ENGINEERS ROSTER

Winter Service Duty Engineers' Roster for the Period 14th October 2019 to 30th April 2020

Week starting Monday	Duty Engineer's Initials	Week starting Monday	Duty Engineer's Initials	Week starting Monday	Duty Engineer's Initials	Week starting Monday	Duty Engineer's Initials
14/10/2019	DO'B	02/12/2019	DF	20/01/2020	DO'B	09/03/2020	DO'B
21/10/2019	DF	09/12/2019	CP	27/01/2020	CP	16/03/2020	DF
28/10/2019	CP	16/12/2019	DO'B	03/02/2020	DF	23/03/2020	CP
04/11/2019	DO'B	23/12/2019	DF	10/02/2020	CP	30/03/2020	DO'B
11/11/2019	DF	30/12/2019	CP	17/02/2020	DO'B	06/04/2020	DF
18/11/2019	CP	06/01/2020	DO'B	24/02/2020	DF	13/04/2020	CP
25/11/2019	DO'B	13/01/2020	DF	02/03/2020	CP	20/04/2020	DO'B
						27/04/2020	DF
Duty Engineer's Name & Initials	Office Phone No	Office Fax No	Office E-mail Address	Home Phone No	Home E-mail Address	Work Mobile No	
Deidre Forde (DF)	0404 20100	0404 69144	dmforde@wicklowcoco.ie				
Declan O'Brien (DOB)	0404 20100	0404 69144	dpobrien@wicklowcoco.ie				
Conor Page (CP)	0404 20100	0404 69144	cpage@wicklowcoco.ie				

Send to: CAFO, Met. Éireann, Glasnevin Hill, Dublin 9. Attention: Duty SMO.

E-mail: forecasts@met.ie Copy to: Ms. Margaret Claffey, Transport Infrastructure Ireland, Parkgate Business Centre, Parkgate Street, Dublin 8.

E-mail: margaret.claffey@TII.ie

APPENDIX 4 - DRIVER'S ROSTER & USE OF STAFF AS HELPERS

Drivers Roster					
Area	Driver(s)	Period	Area	Driver(s)	Period
Baltinglass Municipal District <i>(N81 & Baltinglass Route)</i>	Michael Coleman Derek Kavanagh	October 2019 – April 2020	Arklow Municipal District <i>(Arklow/Avoca Route)</i>	Sean Dunne James O'Byrne	October 2019 – April 2020
Baltinglass Municipal District <i>(N81 & Blessington Route)</i>	Pat Keogh Paddy Teevans	October 2019 – April 2020	Arklow Municipal District <i>(Aughrim Route)</i>	Andrew Byrne Mark Byrne	October 2019 – April 2020
Baltinglass Municipal District <i>(Tinahely Route)</i>	Martin Doyle Paddy Murphy	October 2019 – April 2020	Wicklow Municipal District <i>(Ashford Route)</i>	Francis Crean Vincent Duffy	October 2019 – April 2020
Greystones Municipal District <i>(Greystones Route)</i>	Leslie Carstairs Vincent Keogh	October 2019 – April 2020	Wicklow Municipal District <i>(Roundwood Route)</i>	John O'Connor Paudie Byrne	October 2019 – April 2020
Relief Drivers	Christy Healy Andrew Keogh David Carter Anthony Clarke	October 2019 – April 2020	Bray Municipal District <i>(Enniskerry Route)</i>	David Green Wesley Armstrong	October 2019 – April 2020

USE OF STAFF AS HELPERS

Each individual MD Engineer is responsible for the selection of suitable outdoor staff to be appointed as Helpers on the trucks during salt loading and gritting operations. The use of Helpers is to be in accordance with the procedures contained in the Wicklow County Council document "Policy & Procedures on Lone Working", and all provisions of the Working Time Act (1997) must be adhered to.

APPENDIX 5 - CONTACT DETAILS***Position******Name****Winter Service Manager*

Paul Byrne

Director of Services

Colm Lavery

Senior Engineer

Michael Flynn

Senior Executive Officer

Helena Dennehy

Administrative Officer

Allyson Minion

Duty Engineers

Deidre Forde

Declan O'Brien

Conor Page

Health & Safety Officer

Aoife Cashman

Municipal District Engineers*Wicklow*

Kevin Scanlon

Arklow

John Bowes

Baltinglass (Blessington Area)

Dermot Graham

Baltinglass (Tinahely Area)

Pat Byrne

Bray

Liam Bourke

Greystones

Ruairi O'Hanlon

General Services Supervisors***Arklow Municipal District****Avoca/Rathdrum*

Liam Lott

Aughrim

Hugh Doyle

Arklow

James O'Toole

Baltinglass Municipal District (Blessington Area)

<i>Blessington</i>	Martin Keogh
<i>Dunlavin</i>	John Kehoe
<i>Donard</i>	Billy Cullen

Baltinglass Municipal District (Tinahely Area)

<i>Baltinglass</i>	Seamus O'Halloran
<i>Carnew</i>	DJ Pollard
<i>Tinahely</i>	DJ Pollard

Wicklow Municipal District

<i>Roundwood</i>	Seamus Timmons
<i>Ashford</i>	George Randle
<i>Wicklow</i>	Reuben O'Neill

Greystones Municipal District

<i>Greystones</i>	John O'Gorman
-------------------	---------------

Bray Municipal District

<i>Bray</i>	Tom Bailey
<i>Enniskerry</i>	John O'Connor

Machinery Yard / Stores

<i>Machinery Yard GSS</i>	Dave Collard
<i>Vehicle Maintenance</i>	
<i>Gritter Maintenance</i>	

Drivers

Wesley Armstrong
Andrew Byrne
Paudie Byrne
Mark Byrne
Leslie Carstairs
Michael Coleman
Francis Crean
Liam Dagge
Vincent Duffy
David Green
Sean Dunne
Derek Kavanagh
Pat Keogh
Vincent Keogh
James O'Byrne
John O'Connor
Paddy Teevans
Andrew Keogh
David Carter
Anthony Clarke

Emergency Services

<i>Ambulance Service</i>	999 or 112
<i>Fire Service</i>	999 or 112
<i>Bray Fire Service</i>	01-2861534
<i>Gardai</i>	999 or 112
<i>Bray Garda Station</i>	01-6665300
<i>Civil Defence</i>	0404-67402

Neighbouring Counties Winter Service Managers

<i>Carlow</i>	Brian O'Donovan
<i>Kildare</i>	Adrian Barrett
<i>South Dublin</i>	Tony O'Grady
<i>Dun Laoghaire Rathdown</i>	Robert Burns
<i>Wexford</i>	Noel O'Driscoll
<i>GSJ</i>	Damien Breen
<i>BAM PPP</i>	Jason Bolger

Technical Support

<i>Met Eireann</i>		01-8065550
<i>Vaisala Helpdesk</i>		0044-(0)121-6831269
<i>Kildare NRDO (Salt Procurement)</i>	Chris Hoban	

APPENDIX 6 - PLANT; VEHICLES AND EQUIPMENT

Description (List each piece of equipment on its own line, & its registration plate, if applicable)	Depot Location	Capacity	Date Calibrated	Date Serviced	Date of next Calibration	Date of next Service
Truck No. 18: SPREADER: 6m3 Romaquip S/Steel PLOUGH: Romaquip S/Steel	Yard	6m ³	Sep 2019	Sep 2019	Sep 2020	Sep 2020
Truck No. 15: SPREADER: 6m3 Romaquip S/Steel PLOUGH: Romaquip S/Steel	Tinahely (N81)	6m ³	Sep 2019	Sep 2019	Sep 2020	Sep 2020
Truck No.17: SPREADER: 6m3 Romaquip S/Steel PLOUGH: Romaquip S/Steel	Blessington (N81)	6m ³	Sep 2019	Sep 2019	Sep 2020	Sep 2020
Truck No. 9: SPREADER: 6m3 Romaquip S/Steel PLOUGH: Romaquip S/Steel	Blessington (N81 Reserve)	6m ³	Sep 2019	Sep 2019	Sep 2020	Sep 2020
Truck No. 1: SPREADER: 5m3 Econ PLOUGH: Romaquip	Killadreenan (Bray)	5m ³	Sep 2019	Sep 2019	Sep 2020	Sep 2020
Truck No. 200: SPREADER: 6m3 Romaquip S/Steel PLOUGH: Romaquip	Blessington (N81)	6m ³	Sep 2019	Sep 2019	Sep 2020	Sep 2020

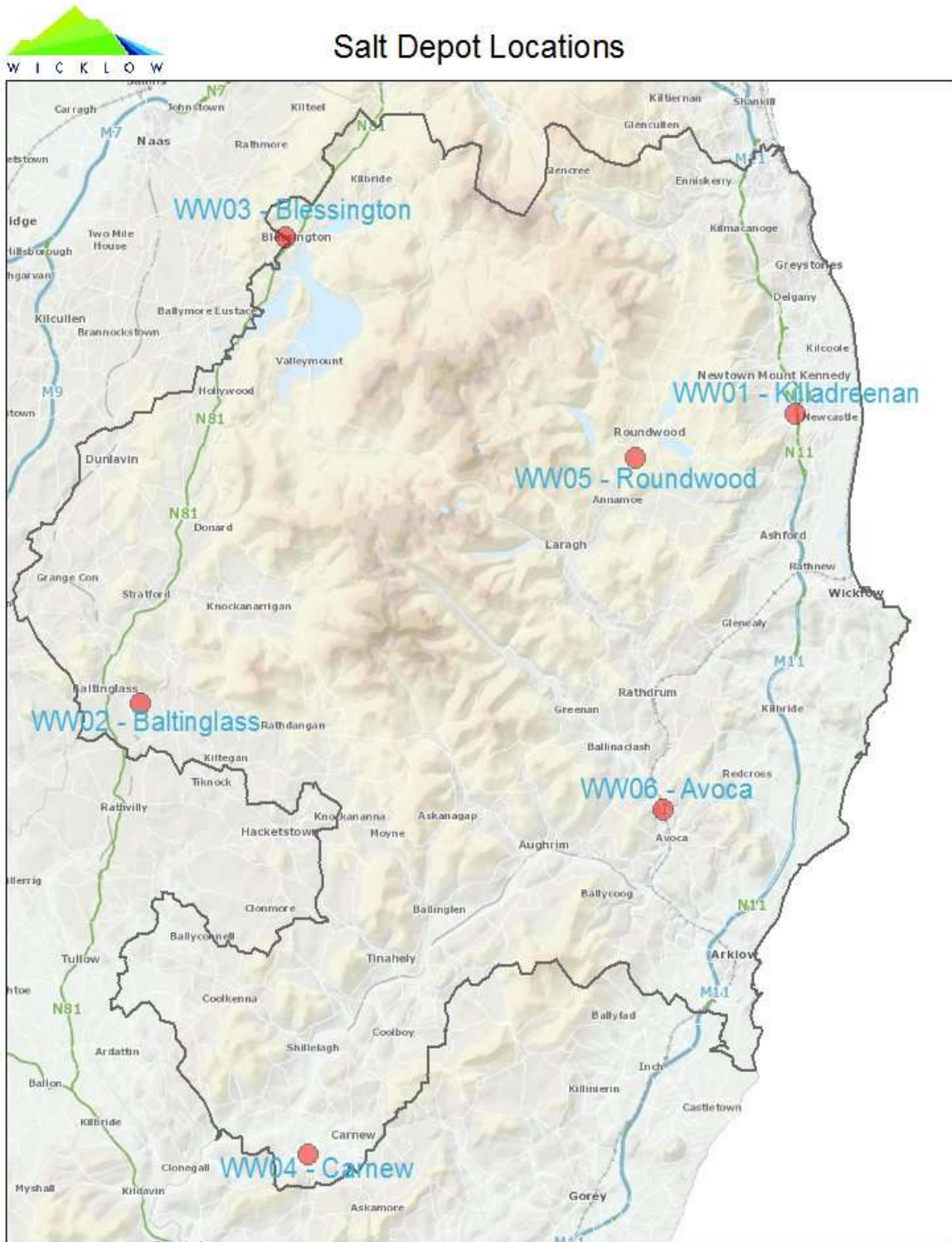
Description (List each piece of equipment on its own line, & its registration plate, if applicable)	Depot Location	Capacity	Date Calibrated	Date Serviced	Date of next Calibration	Date of next Service
Truck No. 203: SPREADER: 6m ³ Romaquip S/Steel PLOUGH: Romaquip	Roundwood	6m ³	Sep 2019	Sep 2019	Sep 2020	Sep 2020
Truck No.6: SPREADER: 6m ³ Romaquip S/Steel PLOUGH: Howie	Avoca (Arklow / Avoca)	6m ³	Sep 2019	Sep 2019	Sep 2020	Sep 2020
Truck No.201: SPREADER: 9m ³ Romaquip PLOUGH: Howie	Avoca (Aughrim)	9m ³	Sep 2019	Sep 2019	Sep 2020	Sep 2020
Truck No. 8: SPREADER: 6m ³ Romaquip S/Steel PLOUGH: Romaquip	Killadreenan (Greystones)	6m ³	Sep 2019	Sep 2019	Sep 2020	Sep 2020
Truck No. 202: SPREADER: 9m ³ Romaquip S/Steel PLOUGH: Romaquip S/Steel	Machinery Yard (Reserve)	9m ³	Sep 2019	Sep 2019	Sep 2020	Sep 2020
Truck No. 2: SPREADER: 5m ³ Econ PLOUGH: Romaquip	Killadreenan (Wicklow)	5m ³	Sep 2019	Sep 2019	Sep 2020	Sep 2020

*All additional equipment required is locally sourced based on local needs from plant hire specialists on a case by case basis.

Snowploughs & Loading Shovels	Depot Location	Fitted to	Date Serviced	Date of next Service
Teleporters:				
MANITOU 1233 M8108500	BLESSINGTON	N/A	Sep 2019	Sep 2020
MANITOU 1233 M8108501	BALTINGLASS	N/A	Sep 2019	Sep 2020
MANITOU 1233 M8108502	MACHINERY YARD	N/A	Sep 2019	Sep 2020
MANITOU 1233 M8108503	NEWTOWN	N/A	Sep 2019	Sep 2020
Other Loaders:				
JCB2CX M8108552	ROUNDWOOD	N/A	Sep 2019	Sep 2020
JCB2CX M8108553	MACHINERY YARD	N/A	Sep 2019	Sep 2020

APPENDIX 7 - WINTER SERVICE DEPOT DETAILS & LOCATION MAP

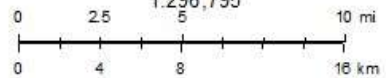
Ref	Salt Depot	GPS Coords	Depot Supervisor Name	Indoor Capacity (Tonnes)	Outdoor Capacity (Tonnes)	Depot Storage Capacity (Tonnes)
WW01	Killadrennan	53.0728, -6.09429	George Randle GSS	600	150	750
WW02	Baltinglass	52.9323, -6.68094	Seamus O'Halloran GSS	0	600	600
WW03	Blessington	53.1704, -6.5447	Martin Keogh GSS	0	1,000	1,000
WW04	Carnew	52.7143, -6.49985	DJ Pollard GSS	0	800	800
WW05	Roundwood	53.0524, -6.23787	Seamus Timmons GSS	0	400	400
WW06	Avoca	52.8715, -6.21997	Liam Lott GSS	0	500	500
4,050						



December 14, 2017

— Wicklow Border

1:296,795



© Ordnance Survey Ireland

Wicklow County Council
Licence Number 2017/35/CCMA/Wicklow County Council